

THE CAMFIELD

Bookings & Function Info Pack



THE CAMFIELD

Function Pack

C

On the bank of the Swan River, nestled in at the base of the Optus Stadium, enjoying it's front row seat to the Perth City skyline and the stunning Matagarup Bridge is where you'll find **The Camfield**,

AUSTRALIA'S LARGEST PUB.

Since 2018 we have become the hub for anything and everything from birthdays, reunions, large scale music events, corporate functions and staff development days to after work drinks, mothers' group catch ups, meeting destinations and even weddings.

With the **overall venue capacity sitting at 2,500** - a capacity that is hit very regularly throughout the year - the incredibly professional team at The Camfield will take care of you and your event, whether it is a booking of 6 people or 600, with the same care, efficiency and welcoming nature across the board.

In this function pack we will walk you through **how we can help you**. Using the size and nature of your event, we will highlight the different combinations of locations within the venue as well as food and beverage packages available to work with you in planning your event.



TABLE OF CONTENTS





IV	4	-----	Overview of Areas (Click Here)
V	5	-----	Bookings For 6 - 40 Guests (Click Here)
VI	6	-----	Bookings For 40 - 130 Guests (Click Here)
VII	7	-----	Rooftop Container (Click Here)
VIII	8	-----	Beer Garden Terrace (Click Here)
IX	9	-----	Stadium Terrace (Click Here)
X	10	-----	Riverside Terrace (Click Here)
XI	11	-----	West Terrace (Click Here)
XII	12	-----	West Terrace + Canteen (Click Here)
XIII	13	-----	The Hall (Click Here)
XIV	14	-----	Venue Map (Click Here)
XV	15	-----	Canape Packages (Click Here)
XVI	16	-----	Add-Ons / Stations (Click Here)
XVII	17	-----	Beverage Options (Click Here)
XVIII	18	-----	Added Extras (Click Here)
XIX	19	-----	Contact Us (Click Here)

OVERVIEW OF AREAS AVAILABLE

Area	Space	Capacity	Private Bar	Coverage	PA+AV	Wheelchair Access
Indoor	The Canteen	6 - 20	Option	Y	Option	Y
	The Microbrewery	6 - 20	N	Y	Option	Y
	Inside Stadium	6 - 35	N	Y	Option	Y
Terraces	West Terrace	40 - 60	N	Undercover Blinds + Heaters	Option	Y
	Riverside Terrace	60 - 80	N	Undercover Blinds + Heaters	Option	Y
	Stadium Terrace	80 - 100	N	Undercover Blinds + Heaters	Option	Y
	Beer Garden Terrace	40 - 60	N	Undercover Blinds + Heaters	Option	Y
Outdoor	The Beer Garden	300 - 650	Option	Seasonal	Option	Y
	Rooftop Container	40 - 50	Option	Umbrellas	N	N
Private	The Hall	100 - 500	Y	Y	Y	Y

*“I HAVE A FEW PEOPLE COMING
& DON'T WANT TO RISK NOT
GETTING A TABLE”*

YOUR OPTIONS:

-  **6 - 20 pax**
-  **Casual, Seated - Dining Tables**
-  **Open Area, Not Sound Proof**
-  **Canteen
Microbrewery**

*The spaces listed above are relaxed and casual inside areas, offering easy access to the main venue bar and facilities.





 **\$10 per person card pre-auth required.**

 **Lunch bookings available to start between 11am & 1.30pm**
Dinner bookings available to start between 4.30pm & 7.30pm

 **Standard Lunch & Dinner Menu Applies**

*“WE JUST WANT A FUN SPOT
TO HAVE SOME NIBBLES
& DRINKS”*

YOUR OPTIONS:

-  **20+ pax**
-  **Casual, Stools + Standing - High Tables**
-  **Open Area, Not Sound Proof**
-  **Canteen
Inside Stadium**

*The spaces listed above are relaxed and casual inside areas, offering easy access to the main venue bar and facilities.

 **\$10 per person card pre-auth required.**

 **Lunch bookings available to start between 11am & 1.30pm**
Dinner bookings available to start between 4.30pm & 7.30pm

 **Standard Lunch & Dinner Menu Applies**


THE CAMFIELD

Function Pack


"I'M CELEBRATING & I'D LOVE MY OWN LITTLE AREA"

YOUR OPTIONS:

 **40 - 130 pax**
130+ (Please Refer to Hall Function Pack)

 **High Tables, Stools, Standing**
(low seating optional in some spaces)

VIP Sectioned Off Area, Not Sound Proof

-  **Rooftop Container** 40 - 50pax ([Click to see space](#))
- Beer Garden Terrace** 40 - 60pax ([Click](#))
- Stadium Terrace** 80 - 100pax ([Click](#))
- Riverside Terrace** 60 - 80pax ([Click](#))
- West Terrace** 40 - 60pax ([Click](#))
- West Terrace + Canteen** 80 - 130pax ([Click](#))

*All of our terraces are undercover, offering cafe blinds, heaters & optional low seating, with easy access to the main bar.

 **Minimum Spend Applies**

 **Daytime functions available to start between 11am & 1.30pm**
Evening functions available to start between 4.30pm & 7.30pm

Canape Package + Grazing Option + Pizza Option
+ Beverage Package Option

THE CAMFIELD

Function Pack


C

ROOFTOP CONTAINER

Outdoors, with a bird's eye view of the venue, umbrellas for shade and a mix of low & high seating options.

 **Seasonally 40 - 50 Guests**

 **Access Via Staircase Only**

 **The Container Bar** is not open at all times, if it is closed for your particular event, all bar service will run through the Main Bar.

 **Minimum Spend Applies**

[\(Click here to go back to the full list of spaces\)](#)

[\(Click here to view our food & bev options\)](#)



7

Rooftop Container

THE CAMFIELD

Function Pack

C

BEER GARDEN TERRACE

Secluded space located between the main bar & the Beer Garden, complete with couches & high bar tables.

 **Seasonally 40 - 60 Guests**

 **Minimum Spend Applies**

[\(Click here to go back to the full list of spaces\)](#)

[\(Click here to view our food & bev options\)](#)



8

Beer Garden Terrace

THE CAMFIELD

Function Pack

C

STADIUM TERRACE

Featuring views of the Optus Stadium with options for high or low seating.

 **Seasonally 80 - 100 Guests**

 **Minimum Spend Applies**

[\(Click here to go back to the full list of spaces\)](#)

[\(Click here to view our food & bev options\)](#)



THE CAMFIELD

Function Pack

C

RIVERSIDE TERRACE

Featuring stunning views of the Swan River,
Perth City, Optus Stadium & Matagarup Bridge.

 **Seasonally 60 - 80 Guests**

 **Minimum Spend Applies**

[\(Click here to go back to the full list of spaces\)](#)

[\(Click here to view our food & bev options\)](#)



THE CAMFIELD

Function Pack

C

WEST TERRACE

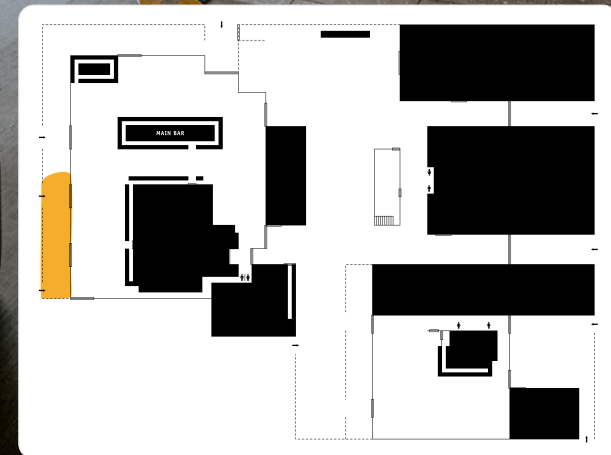
Only a short walk to Main Bar and facilities. The West Terrace overlooks the Swan River & surrounding parkland.

 **Seasonally 40 - 60 Guests**

 **Minimum Spend Applies**

[\(Click here to go back to the full list of spaces\)](#)

[\(Click here to view our food & bev options\)](#)



THE CAMFIELD

Function Pack

C

WEST TERRACE + CANTEEN

Indoor Canteen / Outdoor West Terrace space,
private bar.

 **Seasonally 80 - 130 Guests**

 **Minimum Spend Applies**

[\(Click here to go back to the full list of spaces\)](#)

[\(Click here to view our food & bev options\)](#)



THE CAMFIELD

Function Pack

C

THE HALL

Our incredibly versatile venue within the venue. Fully private and able to cater for all events.

 **100 - 250 Guests seated**

 **130 - 500 Guests standing**

 **Hire fee: \$1000**

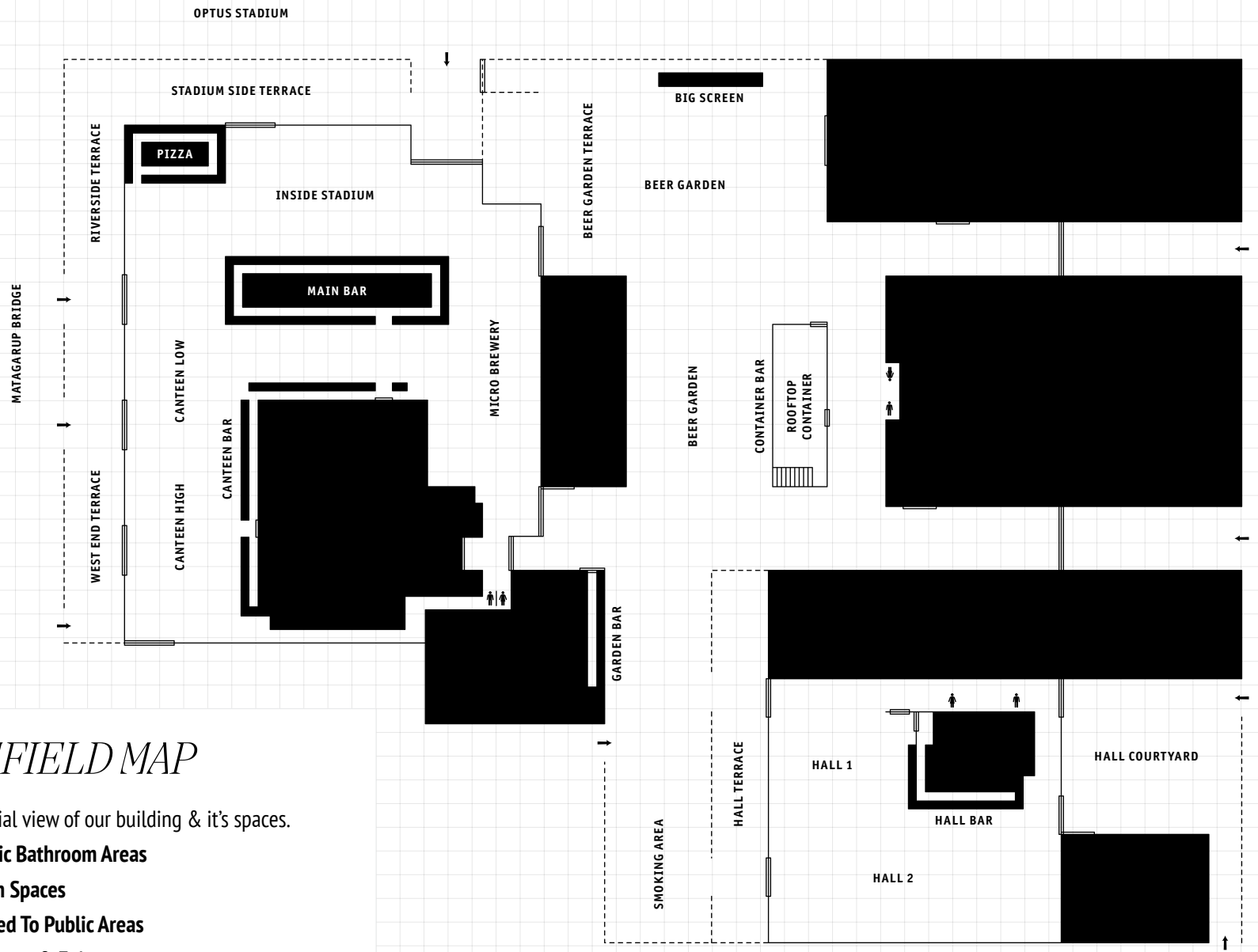
[\(Click here to view The Hall function pack\)](#)



THE CAMFIELD

Function Pack

C



CAMFIELD MAP

A full aerial view of our building & it's spaces.

Public Bathroom Areas

Open Spaces

Closed To Public Areas

Entrance & Exits

(Click here to go back to the full list of spaces)

THE CAMFIELD

Function Pack

CANAPE PACKAGES

*Make your selections from our Full Canape Menu

4 Canape Per Person Package	-----	\$20pp
5 Canape Per Person Package	-----	\$25pp
6 Canape Per Person Package	-----	\$30pp

FEELING EXTRA?

Optional Grazing Options

Optional Pizza Options

STANDING CANAPE MENU

*All menus are subject to seasonal change, availability, and price increases.

Vegetarian

Spinach & Ricotta Quiche, fig vincotto

Pizzaiola Arancini, mayo, ricotta salata gf

Fried Vegetarian Gyoza, mayo, sweet and sour sauce vg *CONTAINS SESAME

Capsicum and eggplant empanada, red chimichurri

Seafood

Chilli Crunch Prawns, cajun mayo

Pizzaiola Arancini, mayo, ricotta salata gf

Seared Tuna Tostada, wasabi mayo, cucumber, red onion

Meat

Satay Chicken Skewers, satay sauce, sesame gf

Lamb Skewer, harisa yoghurt, walnut dukkha

Pecking Duck spring roll, plum sauce

Joe's Mini Sausage Rolls, tomato sauce

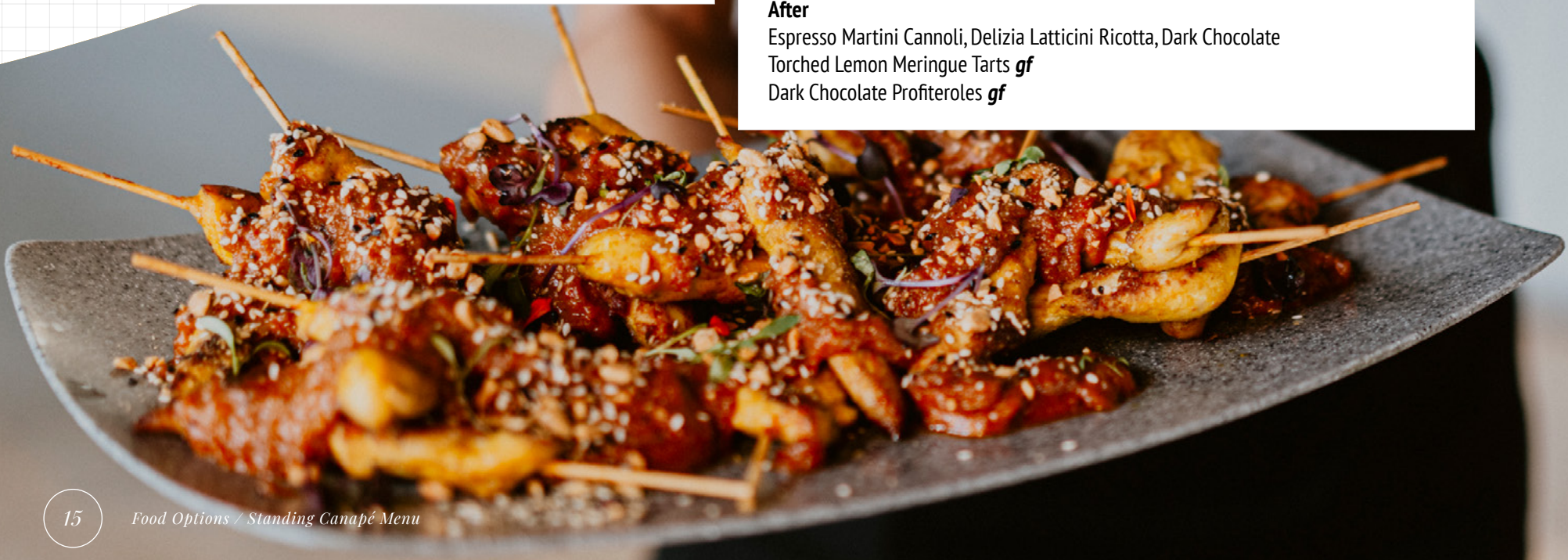
Joe's Mini Beef Pies, tomato sauce

After

Espresso Martini Cannoli, Delizia Latticini Ricotta, Dark Chocolate

Torched Lemon Meringue Tarts **gf**

Dark Chocolate Profiteroles **gf**



ADDITIONAL PLATTERS:

BBQ Brisket Sliders **\$140 Per Platter**
American cheese, mayo

ADDITIONAL GRAZING:

Basket Of Chips **\$12 Per Basket**

Vegan Tasting Plate **\$30 Per Plate**
Selection Of Vegan Canapés

GRAZING PLATTER (Serves 20) **\$100 Per Platter**
House Selection Of Cheese, Cured Meats, Dips, Giardiniera, Crackers and sourdough

GRAZING TABLE (50 Pax Minimum) **\$30pp**
Australian Cheese Selection, Seeded Lavosh, Crackers, Fruit, Quince, Dip, Cured Meats, Giardiniera

SUBSTANTIAL BOXES (50 Pax Minimum)

Battered Fish & Chips **\$15**
Tartare Sauce, Lemon

Pulled Beef Brisket Rolls **\$15**
Pickled Cabbage, House BBQ Sauce

Mini Vegetarian Nachos **\$12**
Queso, Guacamole, Sour Cream, Salsa **gf, v, vgo**

PIZZA:

Margherita **\$22**
Tomato base, La Delizia Latticini fior di latte, fresh basil **v**

Pepperoni **\$25**
Tomato base, fior di latte, pepperoni

Hawaiian **\$25**
Tomato base, fior di latte, ham, pineapple, fresh basil

Mexican Chicken **\$27**
Tomato base, fior di latte, red onion, jalapeno, guacamole

Not a Fun Guy **\$25**
White base, truffle mushroom ragu, fior di latte ricotta, rocket **v**

BBQ Meatlovers **\$27**
BBQ base, chicken, fior di latte, bacon, pepperoni, ranch sauce

Pork & Fennel Sausage **\$26**
Tomato base, fior di latte, caramelised onion, rosemary

Hot 'N' Prawny **\$28**
Garlic marinated prawn, fior di latte, chili, salsa verde, rocket, lemon

Add Vegan Cheese **+\$5**

STATIONS:

PAELLA (50 Pax Minimum)
Vegetable Paella **\$12 per serve**
Soffritto, Salsa Verde, Green Peas, Chilli, Lemon **gf v**
Chicken + Chorizo Paella **\$15 per serve**
Soffritto, Salsa Verde, Green Peas, Chilli, Lemon **gf**

**Additional cost for staffing & equipment applies*

SPIT ROAST (100 Pax Minimum)
**Includes Bread Rolls, Coleslaw + Gravy*

Pork On The Spit **\$20 per serve**
Lamb On The Spit **\$22 per serve**

**Additional cost for staffing & equipment applies*

OYSTER BAR (10doz Minimum Order)
Freshly Shucked Australian Oysters **\$52 per doz**
Shallot Vinaigrette, Hot Sauce + Lemon Price Per Dozen

**Additional cost for staffing & equipment applies*

**All menus are subject to seasonal change, availability, and price increases.*

THE CAMFIELD

Function Pack



BEVERAGE OPTIONS

PACKAGE ONE (STANDARD)

*Includes house wines, including sparkling, all tap beer & cider & non-alcoholic

2 Hour Package	-----	\$50pp
3 Hour Package	-----	\$70pp
4 Hour Package	-----	\$85pp

PACKAGE TWO (PREMIUM)

*Includes premium wines, including sparkling, all tap beer & cider & non-alcoholic

2 Hour Package	-----	\$60pp
3 Hour Package	-----	\$80pp
4 Hour Package	-----	\$95pp

FEELING EXTRA?

Optional Add spirits to any package + \$12pp per hour

BAR TABS ON CONSUMPTION

Set to a limit of your choice, available to any function size. Tab limits be set to meet minimum spend and must be pre-paid.

*All of our tap beers & cider served in either a 425ml schooner or a 570ml pint size. Packaged beer options are not offered unless arranged prior.

*Wine is served by the glass only, 150ml.

*Menu is subject to change and availability.



ADDED EXTRAS

CAKEAGE

Guests are welcome to bring in their own cakes at the time of the booking.

 **\$3pp Max of 30 People** (Capped At \$30)
Flat Fee of \$50 Min of 50 People

**Cakes must be brought in at the time of the booking or no more than 2-hours prior to a booked seated or standing function, clearly named and dated and received by a manager.*

STYLING, FLOWERS & BALLOONS:

All flowers, balloons or styling items and arrangements must be pre-approved by your function coordinator.

Decoration and styling items must be brought with you at the time of arrival and be removed when your booking concludes. If your styling includes items needing assembly, please organise and appropriate time with your function coordinator.

Please let us know if you would like to arrange any of the above through one of our preferred suppliers, we would be happy to assist in coordinating and discussing options with you.

AUDIO VISUAL:

In order to complement our beautiful function & event spaces, we are excited to be able to offer a range of audio visual equipment. All prices include hire and set up costs.

Portable Speaker & Microphone ----- **\$75**

On wheels for easy movement of unit and is perfect for smaller functions where shorter speeches are required.

Mixer, Microphone & 2 Speakers ----- **\$250**

Includes leads and set up. This is perfect for larger functions where more people are required to be able to hear speeches and presentations.

Portable Television ----- **\$50 Each**

A 65" television and stand.

Video – USB-C connection, HDMI connection and lightning (iPhone) connections only.

Audio – USB-C connection, lighting connection and AUX connection only.

**If any equipment is required in addition to the above, your event and functions manager will quote through our partner Reid Corp.*



CONTACT US

e: functions@thecamfieldbar.com.au

w: thecamfieldbar.com.au

p: (08) 6314 1360